



MADANAPALLE INSTITUTE OF TECHNOLOGY & SCIENCE

DEPARTMENT OF CIVIL ENGINEERING

(UGC Autonomous Institution)

Affiliated to JNTUA, Ananthapuramu, Approved by AICTE, New Delhi

Accredited by NBA - Accredited with NAAC A+ Grade - NIRF Band 251-300 (Engg.)



Course Attainment Matrix – Direct and Indirect assessment 2019-23 Batch

Sl	Course Code and Name	% Direct attainment					% Indirect attainment					Overall CO Attainment				
		CO1	CO2	CO3	CO4	CO5	CO1	CO2	CO3	CO4	CO5	CO1	CO2	CO3	CO4	CO5
1	18BIO101 Life Science for Engineers	2.20	0.00	0.80	2.60	1.80	3.00	3.00	3.00	3.00	3.00	2.36	0.60	1.24	2.68	2.04
2	18CE101 Fundamentals of Engineering Mechanics	0.40	0.60	2.60	0.80	0.00	3.00	3.00	3.00	3.00	3.00	0.92	1.08	2.68	1.24	0.60
3	18CE102 Surveying and Geomatics	2.00	2.00	3.00	1.80	1.00	3.00	3.00	3.00	3.00	3.00	2.20	2.20	3.00	2.04	1.40
4	18CE103 Mechanics of Fluids	3.00	1.20	2.60	0.00	2.60	3.00	3.00	3.00	3.00	3.00	3.00	1.56	2.68	0.60	2.68
5	18CE104 Engineering Hydrology	2.40	1.20	3.00	2.40	1.80	3.00	3.00	3.00	3.00	3.00	2.52	1.56	3.00	2.52	2.04
6	18CE105 Concrete Technology	0.80	2.60	3.00	1.80	2.20	3.00	3.00	3.00	3.00	3.00	1.24	2.68	3.00	2.04	2.36
7	18CE106 Environmental Engineering	3.00	1.40	2.40	2.00	2.00	3.00	3.00	3.00	3.00	3.00	3.00	1.72	2.52	2.20	2.20
8	18CE107 Strength of Materials	1.40	2.60	3.00	3.00	1.40	3.00	3.00	3.00	3.00	3.00	1.72	2.68	3.00	3.00	1.72
9	18CE108 Structural Analysis I	1.80	2.40	1.80	1.80	2.40	3.00	3.00	3.00	3.00	3.00	2.04	2.52	2.04	2.04	2.52
10	18CE109 Geotechnical Engineering	0.60	1.20	2.40	0.40	0.80	3.00	3.00	3.00	3.00	3.00	1.08	1.56	2.52	0.92	1.24
11	18CE110 Water Resource and Irrigation	3.00	2.40	2.20	3.00	3.00	3.00	3.00	3.00	3.00	3.00	3.00	2.52	2.36	3.00	3.00
12	18CE111 Structural Analysis II	3.00	3.00	3.00	1.80	3.00	3.00	3.00	3.00	3.00	3.00	3.00	3.00	3.00	2.04	3.00
13	18CE112 Transportation Engineering	3.00	1.60	1.60	3.00	1.80	3.00	3.00	3.00	3.00	3.00	3.00	1.88	1.88	3.00	2.04
14	18CE113 Design of Concrete Structures	2.20	0.80	1.40	2.40	1.80	3.00	3.00	3.00	3.00	3.00	2.36	1.24	1.72	2.52	2.04
15	18CE114 Design of Steel Structures	1.60	0.00	1.80	2.60	0.60	3.00	3.00	3.00	3.00	3.00	1.88	0.60	2.04	2.68	1.08
16	18CE115 Quantity Surveying and Construction Management	2.60	2.60	3.00	2.20	2.20	3.00	3.00	3.00	3.00	3.00	2.68	2.68	3.00	2.36	2.36
17	18CE201 Construction Technology Laboratory	1.00	1.00	1.00	1.00	1.00	3.00	3.00	3.00	3.00	3.00	1.40	1.40	1.40	1.40	1.40
18	18CE202 Surveying and Geomatics Laboratory	1.00	1.00	1.00	1.00	1.00	3.00	3.00	3.00	3.00	3.00	1.40	1.40	1.40	1.40	1.40
19	18CE203 Mechanics of Fluids Laboratory	2.00	2.00	2.00	2.00	2.00	3.00	3.00	3.00	3.00	3.00	2.20	2.20	2.20	2.20	2.20
20	18CE204 Environmental Engineering Laboratory	3.00	3.00	3.00	3.00	3.00	3.00	3.00	3.00	3.00	3.00	3.00	3.00	3.00	3.00	3.00
21	18CE205 Strength of Materials Laboratory	1.00	1.00	1.00	1.00	1.00	3.00	3.00	3.00	3.00	3.00	1.40	1.40	1.40	1.40	1.40
22	18CE206 Computer Aided Building Drawing	3.00	3.00	3.00	3.00	3.00	3.00	3.00	3.00	3.00	3.00	3.00	3.00	3.00	3.00	3.00
23	18CE207 Concrete Technology Laboratory	2.00	2.00	2.00	2.00	2.00	3.00	3.00	3.00	3.00	3.00	2.20	2.20	2.20	2.20	2.20
24	18CE208 Geotechnical Engineering Laboratory	1.00	1.00	1.00	1.00	1.00	3.00	3.00	3.00	3.00	3.00	1.40	1.40	1.40	1.40	1.40
25	18CE209 Transportation Engineering Laboratory	1.00	1.00	1.00	1.00	1.00	3.00	3.00	3.00	3.00	3.00	1.40	1.40	1.40	1.40	1.40
26	18CE210 Structures Laboratory	3.00	3.00	3.00	3.00	3.00	3.00	3.00	3.00	3.00	3.00	3.00	3.00	3.00	3.00	3.00
27	18CE211 Instrumentation and Sensor Technology Laboratory	3.00	3.00	3.00	3.00	3.00	3.00	3.00	3.00	3.00	3.00	3.00	3.00	3.00	3.00	3.00
28	18CE402 Construction Planning and Management	3.00	2.60	3.00	3.00	3.00	3.00	3.00	3.00	3.00	3.00	3.00	2.68	3.00	3.00	3.00
29	18CE405 Air Pollution and Solid Waste Management	0.40	1.60	1.80	1.80	2.40	3.00	3.00	3.00	3.00	3.00	0.92	1.88	2.04	2.04	2.52
30	18CE408 Advance Geotechnical Engineering -Foundations	3.00	2.60	2.60	1.80	1.80	3.00	3.00	3.00	3.00	3.00	3.00	2.68	2.68	2.04	2.04



MADANAPALLE INSTITUTE OF TECHNOLOGY & SCIENCE

DEPARTMENT OF CIVIL ENGINEERING

(UGC Autonomous Institution)

Affiliated to JNTUA, Ananthapuramu, Approved by AICTE, New Delhi

Accredited by NBA - Accredited with NAAC A+ Grade - NIRF Band 251-300 (Engg.)



Sl	Course Code and Name	% Direct attainment					% Indirect attainment					Overall CO Attainment					
		CO1	CO2	CO3	CO4	CO5	CO1	CO2	CO3	CO4	CO5	CO1	CO2	CO3	CO4	CO5	
31	18CE411 Environmental Impact Assessment	3.00	3.00	3.00	3.00	2.40	3.00	3.00	3.00	3.00	3.00	3.00	3.00	3.00	3.00	3.00	2.52
32	18CE416 Traffic Engineering & Management	2.20	1.20	2.40	3.00	1.40	3.00	3.00	3.00	3.00	3.00	2.36	1.56	2.52	3.00	1.72	
33	18CE419 Bridge Engineering	2.40	2.20	3.00	1.40	3.00	3.00	3.00	3.00	3.00	3.00	2.52	2.36	3.00	1.72	3.00	
34	18CE424 Port Engineering	3.00	2.20	3.00	2.40	3.00	3.00	3.00	3.00	3.00	3.00	2.36	3.00	2.52	3.00	3.00	
35	18CE426 Prestressed Concrete Structures	2.40	3.00	3.00	2.20	3.00	3.00	3.00	3.00	3.00	3.00	2.52	3.00	3.00	2.36	3.00	
36	18ENG201 English Communication Listening & Speaking Laboratory	0.00	0.00	0.00	0.00	0.00	3.00	3.00	3.00	3.00	3.00	0.60	0.60	0.60	0.60	0.60	
37	18ENG202 Corporate Communication Laboratory	3.00	3.00	3.00	3.00	3.00	3.00	3.00	3.00	3.00	3.00	3.00	3.00	3.00	3.00	3.00	
38	18HUM101 Economics and Financial Accounting for Engineers	3.00	3.00	3.00	1.20	2.60	3.00	3.00	3.00	3.00	3.00	3.00	3.00	3.00	1.56	2.68	
39	18HUM102 Principles of Management	3.00	2.40	1.00	1.00	1.60	3.00	3.00	3.00	3.00	3.00	2.52	1.40	1.40	1.88	3.00	
40	18MAT104 Probability & Statistics	2.13	2.13	2.11	1.57	0.28	3.00	3.00	3.00	3.00	3.00	2.30	2.30	2.29	1.86	0.82	

In-Charge

HOD



MADANAPALLE INSTITUTE OF TECHNOLOGY & SCIENCE

DEPARTMENT OF CIVIL ENGINEERING

(UGC Autonomous Institution)

Affiliated to JNTUA, Ananthapuramu, Approved by AICTE, New Delhi

Accredited by NBA - Accredited with NAAC A+ Grade - NIRF Band 251-300 (Engg.)



Attainment of Batch 2019-23

Course	Name	PO1	PO2	PO3	PO4	PO5	PO6	PO7	PO8	PO9	PO10	PO11	PO12	PSO1	PSO2	PSO3
1	18BIO101	Life Science for Engineers	1.78	1.78		1.78	1.19									
2	18CE101	Fundamentals of Engineering Mechanics	1.3	1.3			0.87							0.87		
3	18CE102	Surveying and Geomatics	2.17	2.17		2.17	1.45							2.17		
4	18CE103	Mechanics of Fluids	2.1	2.1	2.1									2.1	2.1	
5	18CE104	Engineering Hydrology	2.33	2.33		2.28	2.68		2.52					2.33	1.55	
6	18CE105	Concrete Technology	2.26	2.26		2.26		1.51						2.26		
7	18CE106	Environmental Engineering	2.33	2.33		2.33		1.41	2.33					2.33	2.15	
8	18CE107	Strength of Materials	2.42	2.42	2.42									2.42		
9	18CE108	Structural Analysis I	2.23	2.23										2.23		
10	18CE109	Geotechnical Engineering	1.46	0.98	0.96			0.98						1.46	1.36	
11	18CE110	Water Resource and Irrigation	2.78	2.47	2.63	2.78	2.02	1.85	1.85	1.86				2.78	1.63	1.75
12	18CE111	Structural Analysis II	2.67	1.84		0.94			3					2.81		2
13	18CE112	Transportation Engineering	2.36	1.59	1.59	1.69		2.44	3	1.94		2.31		2.36	1.25	1.25
14	18CE113	Design of Concrete Structures	1.47	1.82	1.98	1.98	1.25			1.98			1.22	1.98	1.32	
15	18CE114	Design of Steel Structures	1.66	1.66	1.1	1.1	1.66	1.1		1.1			1.29	1.66		1.1
16	18CE115	Quantity Surveying and Construction Management	2.62			1.74		2.62					1.74		1.74	2.62
17	18CE201	Construction Technology Laboratory				1.4	0.93				1.4				1.4	0.93
18	18CE202	Surveying and Geomatics Laboratory				1.4	1.4				1.4	0.93			1.4	0.93
19	18CE203	Mechanics of Fluids Laboratory				2.2	1.47				2.2				2.2	1.47
20	18CE204	Environmental Engineering Laboratory				3	3		3		3				3	
21	18CE205	Strength of Materials Laboratory				1.4	1.4				1.4				1.4	
22	18CE206	Computer Aided Building Drawing				3	3				3	2	2		3	
23	18CE207	Concrete Technology Laboratory				2.2	2.2				2.2		1.47		2.2	
24	18CE208	Geotechnical Engineering Laboratory				1.4	1.4				1.4		0.93		1.4	0.93
25	18CE209	Transportation Engineering Laboratory				1.4	1.4				1.4			1.4	0.93	
26	18CE210	Structures Laboratory				3	3				3	2		3	3	
27	18CE211	Instrumentation and Sensor Technology Laboratory				3	3					2		3		3
28	18CE402	Construction Planning and Management	2.36	2.6	3	2	2.5	3	2	2.74	2.74		2.94	2.92		2.92
29	18CE405	Air Pollution and Solid Waste Management	1.82	1.82	1.57			1.32	1.88					1.88	1.88	
30	18CE408	Advance Geotechnical Engineering -Foundations	2.49	2.49	2.09	1.66		1.66						2.49	1.66	
31	18CE411	Environmental Impact Assessment	2.9	2.9			1.94	2.9	2.9	2.9		2.9		2.9	2.9	1.94
32	18CE416	Traffic Engineering & Management	2.23	1.88	2.03	2.06		2.76	3					2.23	1.49	2.23
33	18CE419	Bridge Engineering	2.52	2.52	2.52	2.52	1.68	2.52		2.52				2.52	2.52	
34	18CE424	Port Engineering	2.78	1	2.79	2								2.78	2.78	1.85



MADANAPALLE INSTITUTE OF TECHNOLOGY & SCIENCE

DEPARTMENT OF CIVIL ENGINEERING

(UGC Autonomous Institution)

Affiliated to JNTUA, Ananthapuramu, Approved by AICTE, New Delhi

Accredited by NBA - Accredited with NAAC A+ Grade - NIRF Band 251-300 (Engg.)

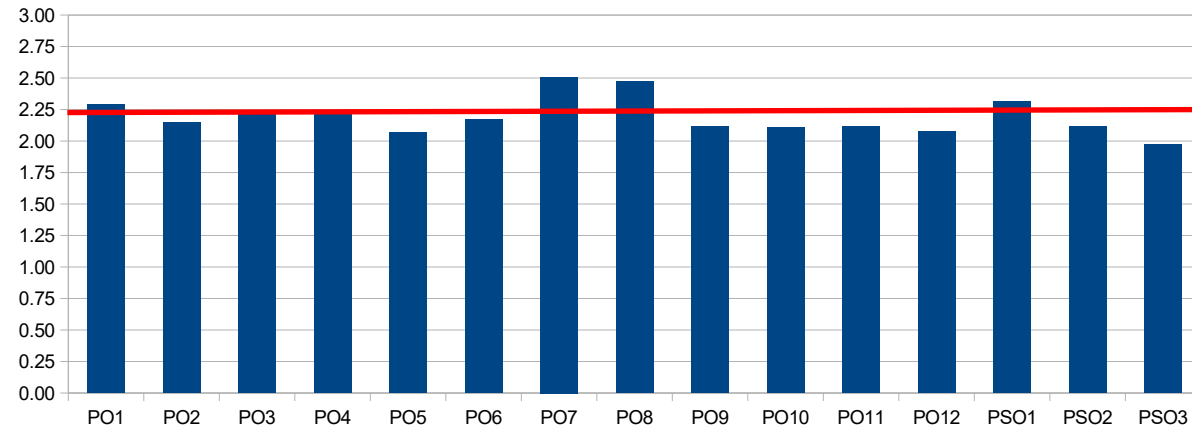


35	18CE426	Prestressed Concrete Structures	2.78	2.78	2.78	2.78	1.85	2.78		2.78				2.78	2.78		
36	18ENG201	English Communication Listening & Speaking Laboratory									0.4	0.6		0.6			
37	18ENG202	Corporate Communication Laboratory									2	3		2			
38	18HUM101	Economics and Financial Accounting for Engineers	2	1.52	2.84					3				1.77		1.93	
	18HUM102	Principles of Management	2	1.31	1.64	1.96		1.68						1.36			
39	18MAT104	Probability & Statistics	1.92	1.92													
Overall Direct Attainment			2.23	2.01	2.13	2.06	1.91	2.04	2.50	2.38	1.96	1.92	1.93	1.88	2.22	1.97	1.79

Graduate Exit Survey	2	2	2	3	2	2	3	2	3	3	3	3	2	3	3	3
Employer Survey	3	3	3	3	3	2	2	3	2	2	3	3	3	3	3	3
Alumni Survey	3	2	3	3	2	3	2	3	3	3	3	3	2	3	3	2
Overall Indirect Attainment	2.67	2.33	2.67	3.00	2.33	2.33	2.33	2.67	2.67	2.67	3.00	2.33	3.00	3.00	3.00	2.67

Overall Direct Attainment	2.23	2.01	2.13	2.06	1.91	2.04	2.50	2.38	1.96	1.92	1.93	1.88	2.22	1.97	1.79
Overall Indirect Attainment	2.55	2.70	2.70	2.85	2.70	2.70	2.55	2.85	2.70	2.85	2.85	2.85	2.70	2.70	2.70
Overall Attainment	2.29	2.15	2.24	2.22	2.07	2.17	2.51	2.48	2.11	2.10	2.11	2.07	2.32	2.11	1.97

B.Tech. in Civil Engineering 2019-23 Batch Overall PO & PSO Attainment



In-Charge

HOD